



Formerly P.C. Simonton & Associates, Inc.

## Addendum No. Two

Date: August 11, 2020  
Project: Tower Street Reconstruction, MES No. 2019-120  
Engineer: M.E. Sack Engineering  
Hinesville, Georgia



The original plans, specifications, and bid documents are amended to include the following:

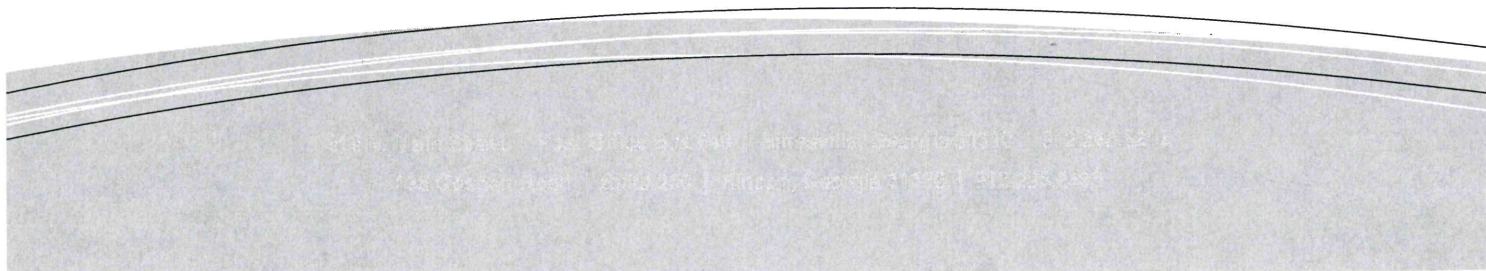
### Bid Items:

- Bid items for Contract B have been revised
  - ADA Ramps (3) has been removed
  - Detectable Warning Surface (4) was added
  - Sidewalk 1150 has been revised to include detectable warning surface

### Plans:

- Include sheets 4 through 6 to the original plans.
  - Detectable warning surface was added to the intersections of Palm Street and Tower Street, Palm Street and 1<sup>st</sup> Street and at the Northern sidewalk Intersection along Love Street.
  - ADA Type-D Ramp was removed from the Northern Sidewalk Intersection along Love Street.

-END-



**Tower Street Reconstruction  
for  
City of Folkston**

**Bid Items**

<b>Item No.</b>	<b>Estimated Quantity</b>	<b>Units</b>	<b>Description</b>	<b>Unit Price</b>	<b>Total Price</b>
<b>A. <u>Contract A: PI# 0016208</u></b>					
1	2,495	SY	Asphalt/ Base Removal		
2	3,700	SY	8" Graded Aggregate Base		
3	3,700	SY	2" 9.5mm Superpave Asphalt		
4	75	SY	5' Concrete Sidewalk		
5	1,580	LF	18" Curb & Gutter		
6	1	LS	Signage & Striping		
7	1	LS	Structure Relocation		
8	3	EA	ADA Ramps		
9	1	EA	6'x4' Pedestal Top		
10	1	EA	4'x4' Doghouse Junction Box		
11	1	EA	Single Wing Catch Basin		
12	1	EA	Double Wing Catch Basin		
13	2	EA	4'x4' Catch Basin		
14	47	LF	12" HDPE Pipe		
15	144	LF	12" Reinforced Concrete Pipe		
16	1	LS	Erosion Control		
17	1	LS	Tree Removal		
18	1	LS	Clearing & Grubbing		
19	1	LS	Grading		
20	1	LS	Traffic Control		
21	1	LS	Mobilization (5% Max)		
<b>Total Bid Contract A</b>					
<b>B. <u>Contract B: PI #0016209</u></b>					
1	2,910	SY	8" Graded Aggregate Base		
2	2,910	SY	2" 9.5mm Superpave Asphalt		
3	50	SY	Concrete Driveway		
4	480	SY	5' Concrete Sidewalk		
5	275	LF	12" Reinforced Concrete Pipe		
6	59	LF	18" Reinforced Concrete Pipe		
8	1	EA	Flared End Section		
9	1	EA	4'x4' Junction Box		
10	4	EA	Detectable Warning Surface		

Contract B Continued

Item Estimated							
No.	Quantity	Units	Description		Unit Price	Total Price	
11	2	EA	Area Drain				
12	3	EA	Grate Inlet				
13	1	LS	Signage & Striping				
14	1	LS	Structure Relocation				
15	1	LS	Demolition				
16	1	LS	Tree Removal				
17	1	LS	Erosion Control				
18	1	LS	Grassing				
19	1	LS	Clearing & Grubbing				
20	1	LS	Grading				
21	1	LS	Traffic Control				
22	1	LS	Mobilization (5% Max)				
				<b>Total Bid Contract B</b>			
				<b>Total Bid Contract A &amp; B (if bidding both)</b>			

SECTION 01150  
MEASUREMENT AND PAYMENT

PART 1 - GENERAL

1.01 QUANTITIES

- A. Quantities: Quantities listed in the Proposal are approximate only and are intended to serve as a guide in comparing bids, and may be increased or decreased without invalidating the unit price bid.
- B. Payment: Contractor shall be paid for actual in place quantities as determined by the Engineer field measurements.
- C. Discrepancies: In case of discrepancies between the figures shown in the unit prices and totals, the unit prices shall apply and the totals shall be corrected to agree with the unit price.

PART 2 - MEASUREMENT AND PAYMENT

2.01 ASPHALT/ BASE REMOVAL

- A. Measurement: Measurement shall be made on the basis of each square yard of pavement and base removed in accordance with the Contract Documents.
- B. Payment: Payment will be made on the basis of the unit price stated in the bid. The work shall include, but is not limited to marking, cutting, and removal of pavement and base materials to an approved off site landfill as necessary.

2.02 CONCRETE DRIVEWAY

- A. Measurement: Measurement shall be made on the basis of the number of square yards of concrete at the specified thickness as shown on the construction plans. Prior to installation of the concrete all areas will be checked for proper thickness.
- C. Payment: Payment will be made on the basis of the number of square yards of concrete in place in accordance with the unit price bid. The unit price bid shall include all labor, materials and equipment necessary to complete the task. The task shall include but not limited to, all excavation, forming, grade staking, compaction, dewatering, wire, chairs, rebar, grading, earth removal, concrete to include hauling and placement, form wrecking, cleanup and surface restoration.

2.03 GRANITE ROADWAY BASE

- A. Measurement: Measurement shall be made on the basis of the number of square yards of graded aggregate base applied to the parking lot and roadway at the specified thickness as shown on the construction plans. Irregular areas such as turnouts, filler strips and intersections will be measured to the closest square yard. Prior to installation of the asphalt all areas will be checked for proper thickness.
- B. Payment: Payment will be made on the basis of the number of square yards of granite crusher run (graded aggregated) base at the specified thickness applied to the

roadway at the unit price stated in the bid. The price shall include all labor, materials and equipment necessary to complete the task. Work shall include, but not be limited to, the furnishing, hauling, placing and compaction of the crusher run base in order to bring the base to the lines, grades, and cross sections shown on the construction plans or established by the Engineer.

#### 2.04 ASPHALT PAVING

- A. Measurement: Measurement will be made on the basis of each square yard of asphalt in place, in accordance with the construction plans and accepted by the Engineer. Actual weight will be determined by weighing on a certified motor truck scale and presenting a notarized copy of the recorded weight to the Engineer.
- B. Payment: Payment will be made on the basis of the number of square yard of asphalt in place in accordance with the unit price bid as stated in the contract. Work shall include, but is not limited to, the furnishing, hauling, placing and compaction of the asphalt in order to bring the pavement to the lines, grades and cross sections as designated on the construction plans and as determined by the Engineer. The unit price bid shall also include surface cleaning, prime, tack and pavement.

#### 2.05 SIDEWALK

- A. Measurement: Measurement shall be made on the basis of the number of ADA ramps, detectable warning surfaces, and square yards of sidewalk at the specified thickness and dimension as shown on the construction plans. Irregular areas such as turnouts, filler strips and intersections will be measured to the closest square yard. Prior to installation of the sidewalk all areas will be checked for compaction.
- B. Payment: Payment will be made on the basis of the number of ADA ramps and detectable warning surfaces installed and square yards of sidewalk installed at the unit price stated in the bid. The price shall include all labor, equipment and material to complete the task. The task shall include, but not be limited to, grading, compaction, construction joints, expansion joints, fiber mesh or wire reinforcing, accommodation for sidewalk pavers, furnishing, hauling, placing and compaction of the concrete in order to bring the sidewalk to the lines, grades, and cross sections shown on the construction plans, form wrecking, final cleanup and surface restoration. All ADA ramps to be in compliance with The Americans with Disabilities Act (ADA Guidelines).

#### 2.06 CURB AND GUTTER

- A. Measurement: Measurement will be made on the basis of each linear foot of curb and gutter installed to the lines and grades shown on the plan. The size of the curb and gutter will be shown on the plans and indicated on the bid documents.
- B. Payment: Payment will be made on the basis of the unit price stated in the bid. The price shall include all labor, materials and equipment necessary to complete the task. The task shall include, but is not limited to, all excavation, forming, grade staking, furnishing, hauling, placing and compaction of the concrete, curb and gutter installation, dewatering, form wrecking, cleanup and surface restoration.

## 2.07 SIGNAGE AND STRIPING

- A. Measurement: Measurement will be made on the basis of the completed item in accordance with the approved construction plans and specifications.
- B. Payment: Payment will be made in accordance with the price stated in the bid. The price shall include all labor, materials, and equipment necessary to complete the task. The task shall include, but not limited to the relocation of existing signs and supplying and installing new signs, sign poles, all associated hardware and striping in accordance with the approved construction plans, surface restoration and cleanup. All signage and striping shall be in compliance with MUTCD latest edition and GDOT Standard Specifications and Details.

## 2.08 STRUCTURE RELOCATION

- A. Measurement: Measurement shall be based on the basis of the lump sum of the items to be removed or relocated.
- B. Payment: Payment will be made on the basis the lump sum bid and at the completion of the project. Partial payments will not be made. The project's completion will be determined by the engineer. Work shall include all labor, materials, and equipment necessary to complete the task. Work shall include, but is not limited to, relocating existing structures to include mailboxes, signage, fencing, power pole coordination and other structures that may impede construction, and includes the provision of temporary mailboxes throughout the construction process, cleanup and surface restoration.

## 2.09 DRAINAGE STRUCTURE (Catch Basins, Yard Drain, Area Drain, Junction Box, Headwall, Concrete Flumes, Flared End Section, Pipe End Treatments, Interference Box, Outlet Structures)

- A. Measurement: Measurement will be made on the basis of each drainage structure installed at the elevation and location designated on the construction plans.
- B. Payment: Payment will be made on the basis of each structure installed at the unit price bid. The unit price bid shall include furnishing all labor, materials and equipment necessary to complete the task. The task shall include, but not limited to, excavation, necessary shoring and sheeting, dewatering, forming, form wrecking, foundations as required, furnishing and installing the structure, placement of grates, manhole rings and covers as applicable, grouting around pipe, backfill, compaction, grading, complete surface restoration and cleanup.

## 2.10 DRAINAGE PIPE

- A. Measurement: Measurement will be made on the basis of each linear foot of drainage pipe installed at the elevation, grade and alignment as designated on the construction plans.
- B. Payment: Payment will be made on the basis of each linear foot of drainage pipe installed at the elevation, grade and alignment as designated on the construction plans at the unit price bids as stated in the contract. Work shall include, but not be

limited to, all excavation, trenching, necessary shoring and sheeting, all pipe bedding, furnishing and installing pipe, backfill, compaction in accordance with manufactures recommendation and specifications herein, complete surface restoration and cleanup.

## 2.11 EROSION CONTROL

- A. Measurement: Measurement shall be made on the basis of the percentage completed item in accordance with the plans, specifications and bid documents.
- B. Payment: Payment will be in accordance with the price stated in the bid. The unit price shall include all labor, materials and equipment necessary to prevent erosion from the site. Work shall include, but not be limited to, installation of all silt fence, rip rap, rock, geofabric, signage, grassing both temporary and permanent, fertilization, water quality monitoring, and other erosion control activities shown on the plans in accordance with the plans, details and state requirements found in the Manual for Erosion and Sediment Control in Georgia.

## 2.12 DEMOLITION

- A. Measurement: Measurement shall be made on the basis of the percentage completed item in accordance with the plans, specifications and bid documents.
- B. Payment: Payment will be made on the basis of the completed item of work. The lump sum price shall include furnishing all labor, materials and equipment necessary to complete this item of work. Work shall include, but is not limited to, removal of any landscape, storm pipe, drainage structures, rip rap, or other material that exist and will not be used as part of this project, excavation, disposal at an approved site, backfill, compaction and surface restoration.

## 2.13 CLEARING & GRUBBING

- A. Measurement: Measurement shall be made on the basis of the percentage complete of the task in accordance with the plans and specifications.
- B. Payment: Payment will be made at the lump sum stated in the bid. The price bid shall include furnishing all labor, materials and equipment necessary to complete this item. Work shall include, but is not limited to, removal of all trees, shrubs and undergrowth that presently exist, preventing the construction of this project. All material removed including vegetation, roots and organic mat shall be removed from the site and disposed of at a permitted site. The contractor shall take special care not to disturb the roots of trees that are marked to remain. Trees to be saved shall be marked and approved by the engineer prior. Trees to be saved shall have the appropriate tree protection installed.

## 2.14 GRADING

- A. Measurement: Measurement will be made on the basis of the percent complete of the item of work. All cut and fill quantities are based on the difference between initial topographic data and proposed contours shown on the plans.

- B. Payment: Payment will be made at the price bid for each item. Work shall include all equipment, labor and material to complete each task. This item will include, but is not limited to, excavation, material transportation and placement, grading to the lines and grades shown on the plans, compaction and stabilization.

## 2.15 GRASSING

- A. Measurement: Measurement shall be made on the basis of the completed item in accordance with the construction plans and bid items.
- B. Payment: Payment will be made in accordance with the price stated in the bid. The unit price shall include, but is not limited to, furnishing all labor, materials and equipment necessary for the satisfactory growth of grass on all disturbed areas in accordance with plans and specifications. Work shall include, but not be limited to, furnishing all materials, fertilizer, soil samples, grass seed, raking, leveling, watering, maintenance and final surface restoration. Final payment will not occur until permanent grass is established.

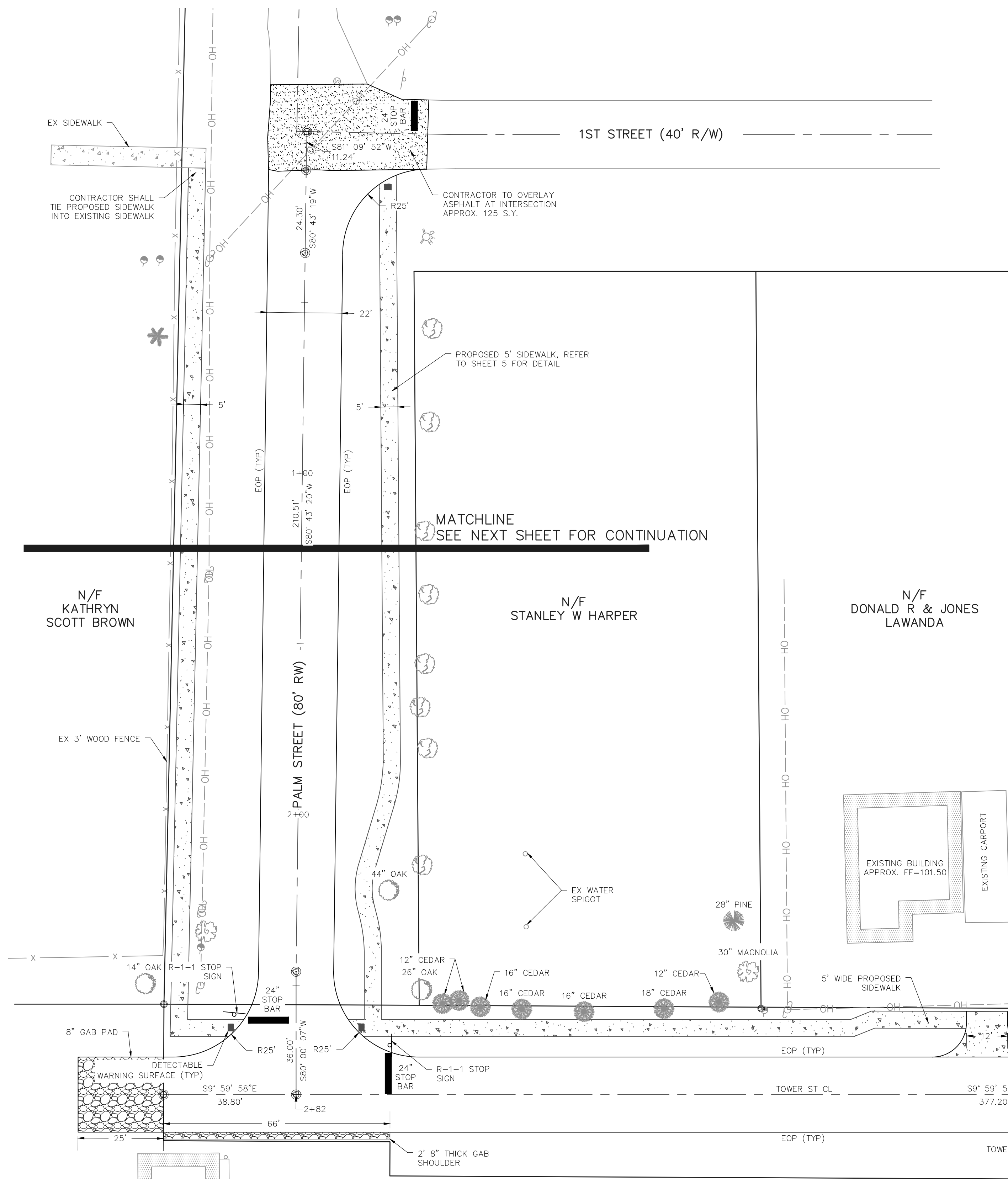
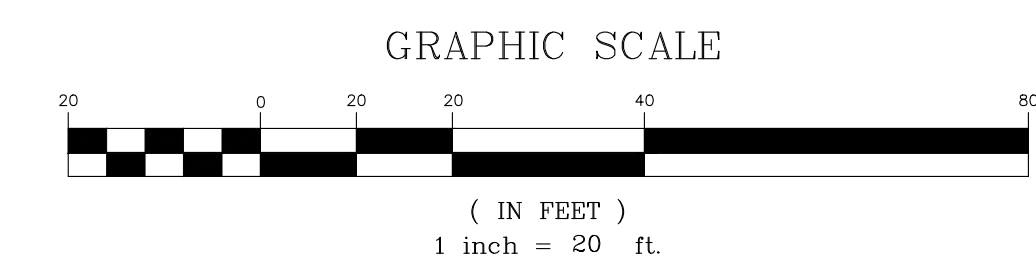
## 2.15 TRAFFIC CONTROL

- A. Measurement: Measurement shall be made on the basis of the percentage complete of the lump sum bid in accordance with the construction plans and bid items.
- B. Payment: Payment shall be made on the basis of the percentage complete of the lump sum price stated in the bid as determined by the project engineer. The lump sum shall include furnishing all labor, materials and equipment necessary to complete the task. The task shall include, but is not limited to, the placing, moving, and maintenance of all signage, barricades, cones, barrels, flagging, flag men, and guide vehicles throughout the construction process to safely reroute traffic from existing traffic patterns. Traffic control shall be done in a manner to safely warn, reroute, and lead vehicles to their destination. Additional signage will be required if the engineer deems that the traffic control in place does not fully meet the required intent of the task. Changing of existing traffic patterns shall be communicated with the engineer no less than 48 hours prior to.

## 2.16 MOBILIZATION

- A. Payment will be made for the price as stated in the Contract once the Contractor has established his construction yard, and met the requirements established in the Contract Documents. Mobilization will be recognized complete once the Contractor has provided a construction schedule and moved his equipment and a substantial amount of material to the job site. Construction must be underway and progressing. Payment for mobilization will be limited to a maximum amount not to exceed 5% of the bid price.





DRAWING COMPLETED BY: ELLIOTT WILSON

REVISÉ: 4. TIA COMMENTS



DATE: 8/11/2020

309 NORTH MAIN STREET  
P.O. BOX 649  
HINESVILLE, GA 31313  
TEL: (912) 368-5212

1050 PARKSIDE COMMONS  
SUITE 101  
GREENSBORO, GA 30642  
TEL: (706) 454-0870



**P.C. Simonton  
& Associates, Inc.**  
Consulting Engineers

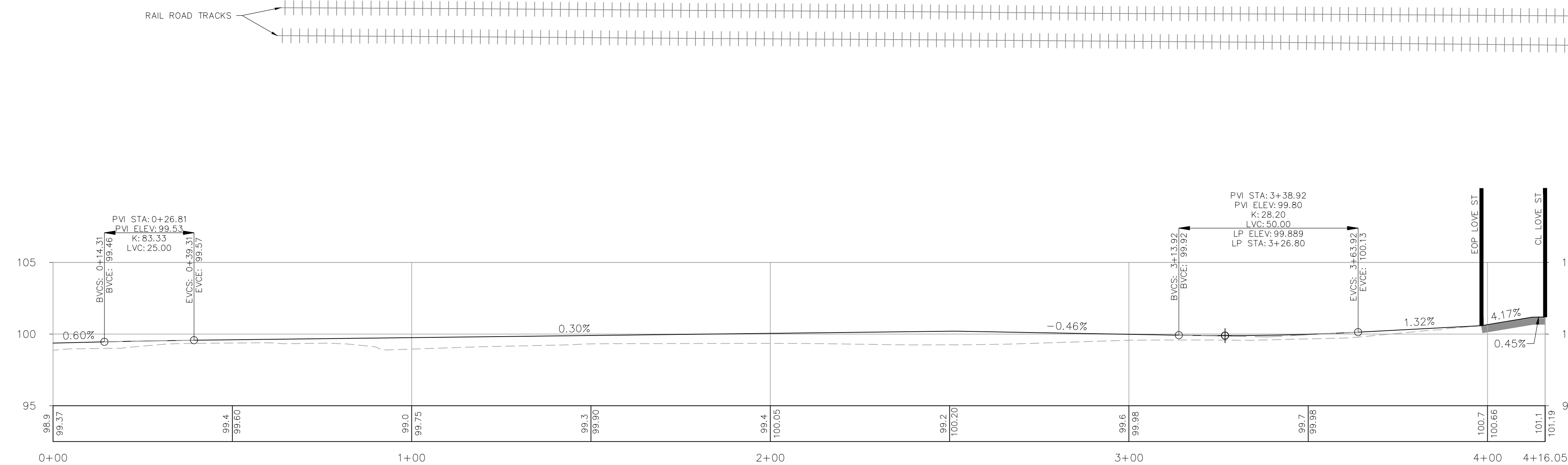
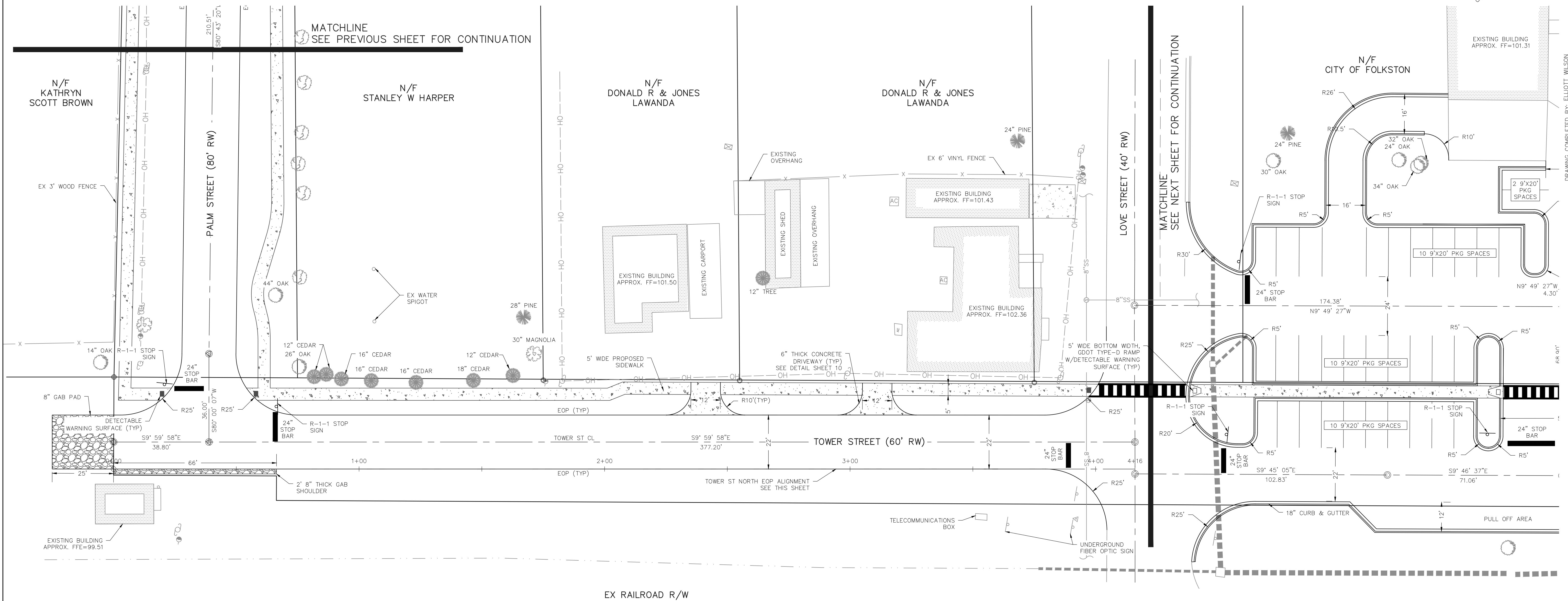
***Tower Street Reconstruction***  
*for*  
***The City of Folkston***  
*Charlton County, Georgia*

## Site Plan

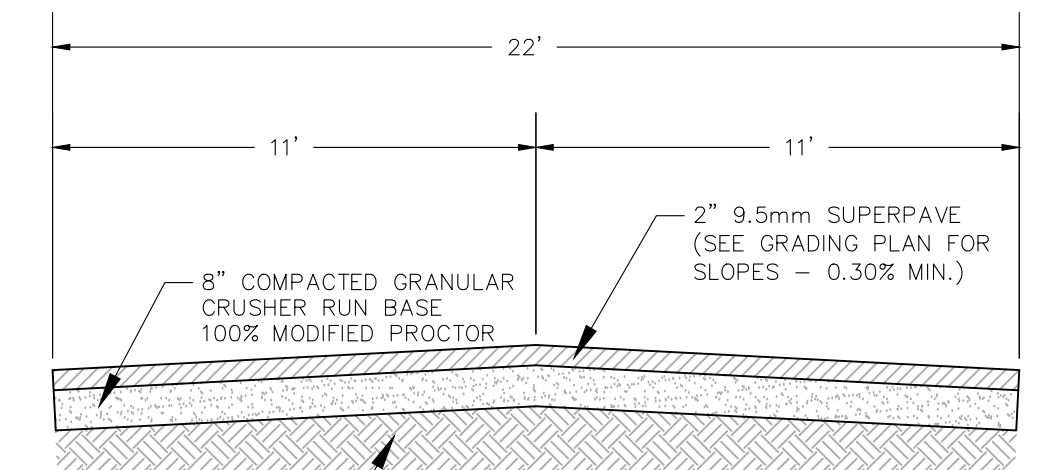
DATE: AUGUST 19, 2019  
FILE NO: 2019-120PRJ  
SHEET: 4

FILE NO: 2
SUBJECT: 4

(TOWER STREET NORTH)

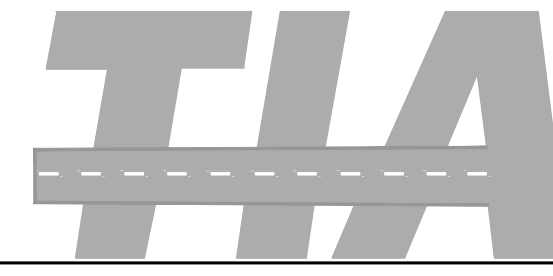


TOWER ST NORTH EOP PROFILE  
VERT. SCALE: 1"=5'  
HORIZ SCALE: 1"=20'

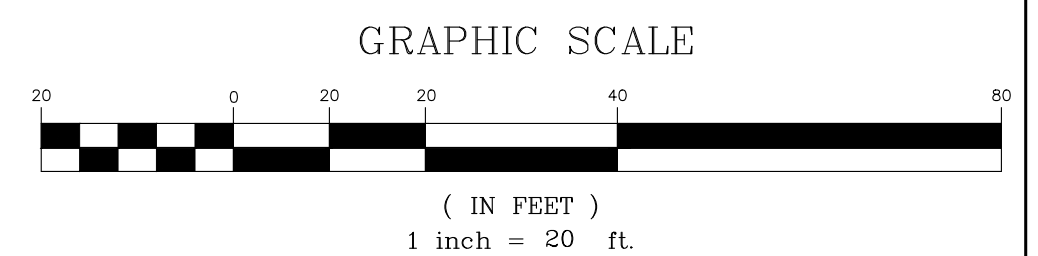


TOWER STREET NORTH PAVEMENT DETAIL  
N.T.S.  
2019-120

STRIPING NOTE: ROAD CENTERLINE SHALL BE DOUBLE YELLOW, PAINT. NO CENTERLINE SHALL BE REQUIRED IN OFF STREET PARKING LOT.



PI #0016208  
PI #0016209



REVISIONS

4	TIA COMMENTS
---	--------------

THIS DRAWING IS AN INSTRUMENT OF SERVICE AND REMAINS THE PROPERTY OF P.C. SIMONTON & ASSOCIATES, INC. IT MAY NOT BE COPIED, ALTERED, REPRODUCED, OR TRANSMITTED IN ANY FORM OR BY ANY MEANS, ELECTRONIC OR MECHANICAL, WITHOUT THE WRITTEN PERMISSION OF P.C. SIMONTON & ASSOCIATES, INC. THE INFORMATION CONTAINED HEREIN IS INTENDED FOR THE USE OF THE CLIENT AND IS NOT TO BE USED FOR ANY OTHER PROJECT OR PURPOSE. P.C. SIMONTON & ASSOCIATES, INC. ASSUMES NO RESPONSIBILITY FOR DATA GENERATED, ALTERED OR STAKED FROM THIS DRAWING. IN THE EVENT OF A DISPUTE, HARD COPIES SHALL PREVAIL OVER ANY ELECTRONIC MEDIA.

DATE: 8/11/2020

REGISTERED PROFESSIONAL ENGINEER  
MARCUS E. SACK

DATE: 8/11/2020

309 NORTH MAIN STREET  
P.O. BOX 649  
HINESVILLE, GA 31313  
TEL: (912) 368-3212

**P.C. Simonton & Associates, Inc.**

Consulting Engineers

1050 PARKSIDE COMMONS  
SUITE 101  
GREENSBORO, NC 27409  
TEL: (760) 454-0870

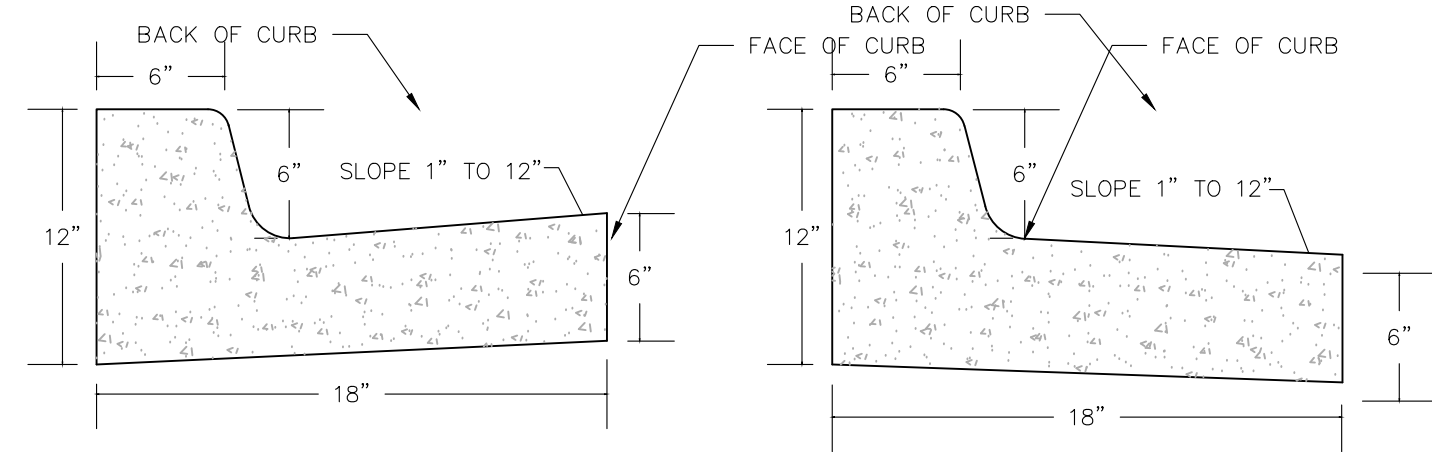
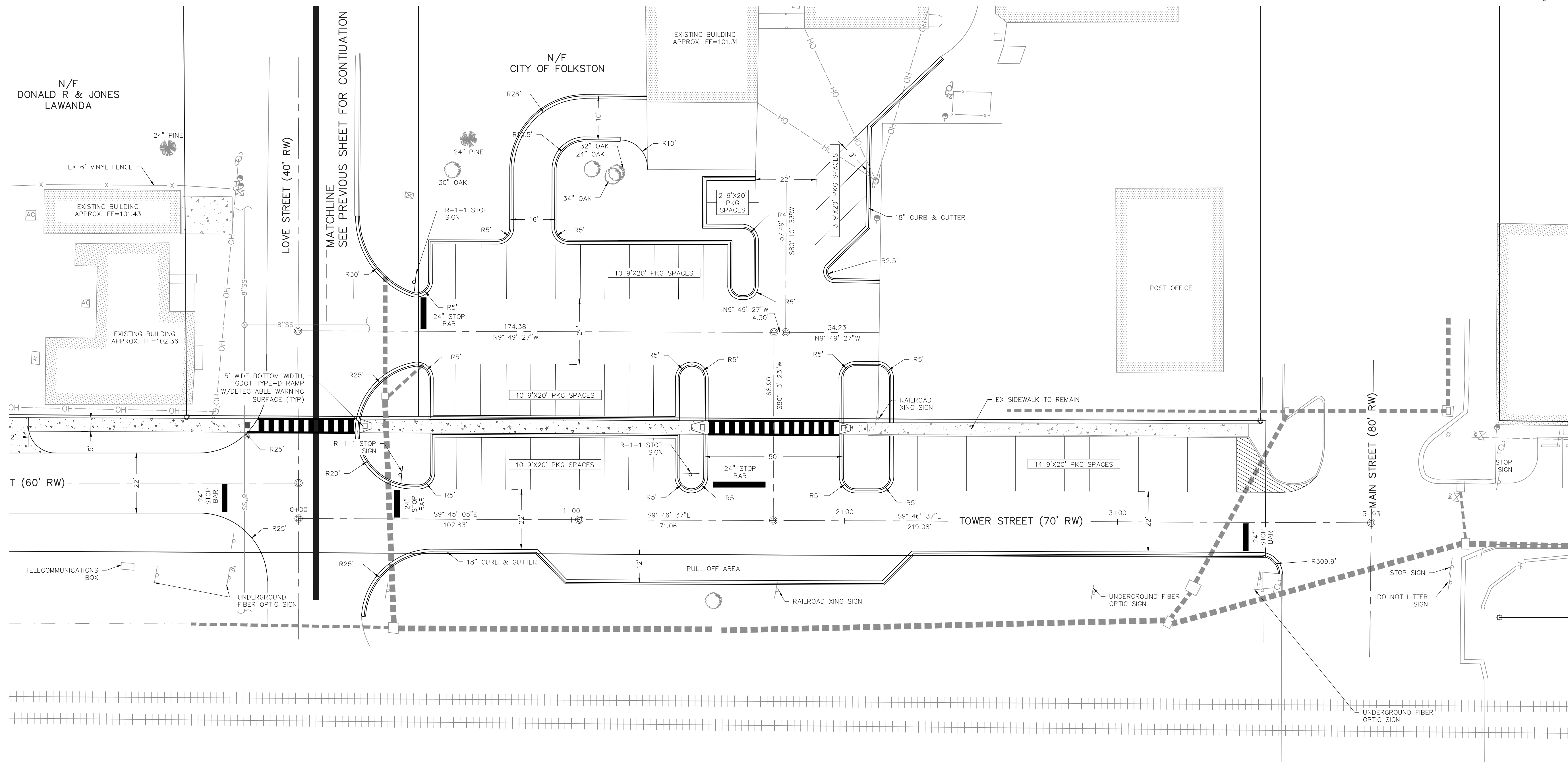
**The City of Folkston**

Charlton County, Georgia

Site Plan

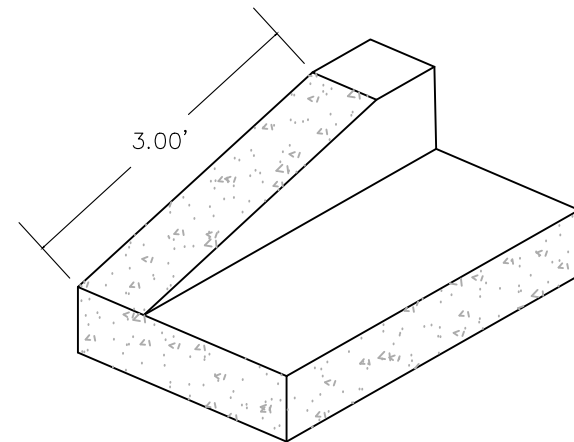
DATE: AUGUST 19, 2019  
FILE NO: 2019-120PRJ  
SHEET: 5

(TOWER STREET SOUTH)



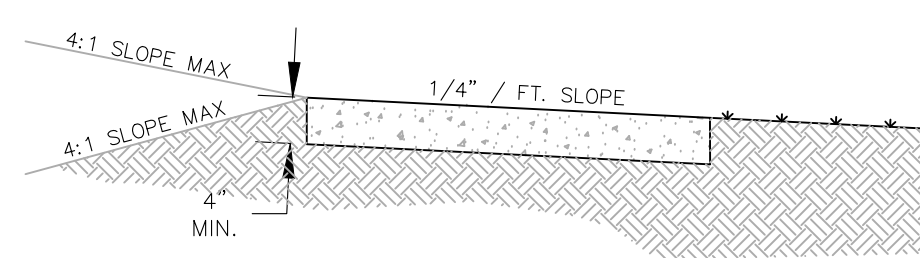
STANDARD TYPE  
CURB & GUTTER  
N.T.S.

SPILL-OUT TYPE  
CURB & GUTTER  
N.T.S.



CURB TERMINATION  
DETAIL  
N.T.S.

CURB & GUTTER DETAIL  
N.T.S.

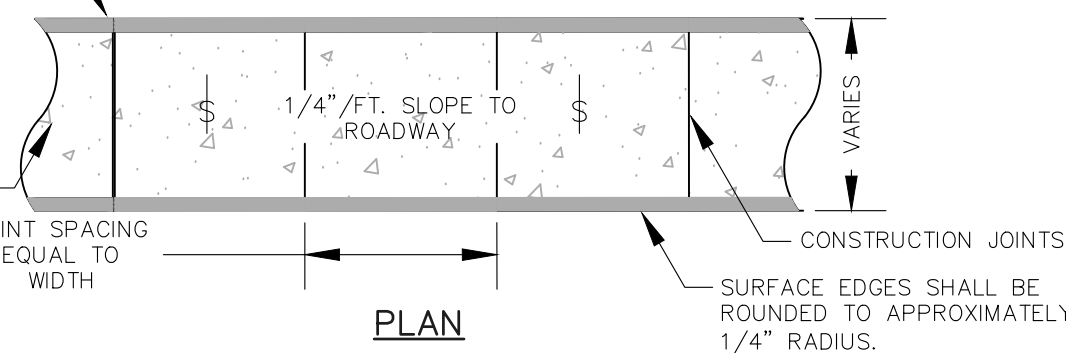


SECTION

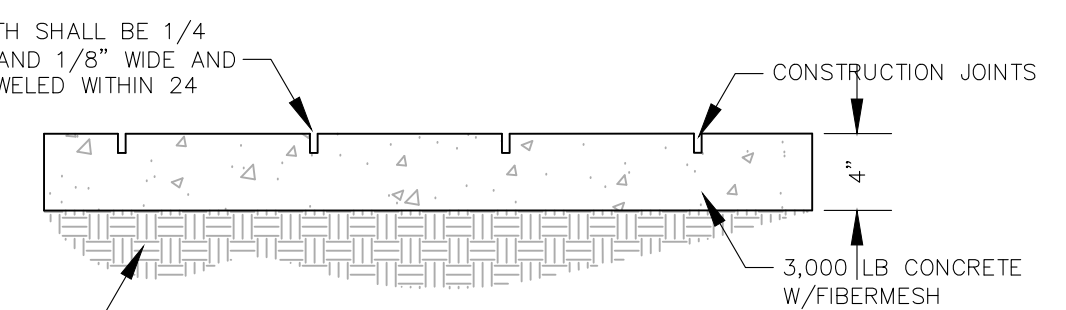
1/2" THICK EXPANSION JOINT FILLER  
SHALL BE PLACED A MAXIMUM OF 20'  
INTERVALS AND AT ALL INTERSECTIONS  
W/STEPS, CURBS, OR ANY OTHER  
WALKS ABUTTING STRUCTURES.

FINAL FINISH SHALL BE MEDIUM TO  
LIGHT BROOM FINISH AND UNIFORM  
EXCEPT 6" EDGE WITH SMOOTH  
TROWEL FINISH. ALL EDGES

CONSTRUCTION JOINT DEPTH SHALL BE 1/4  
OF THE SLAB THICKNESS AND 1/8" WIDE AND  
SHALL BE SAWED OR TROWELED WITHIN 24  
HOURS OF POURING.

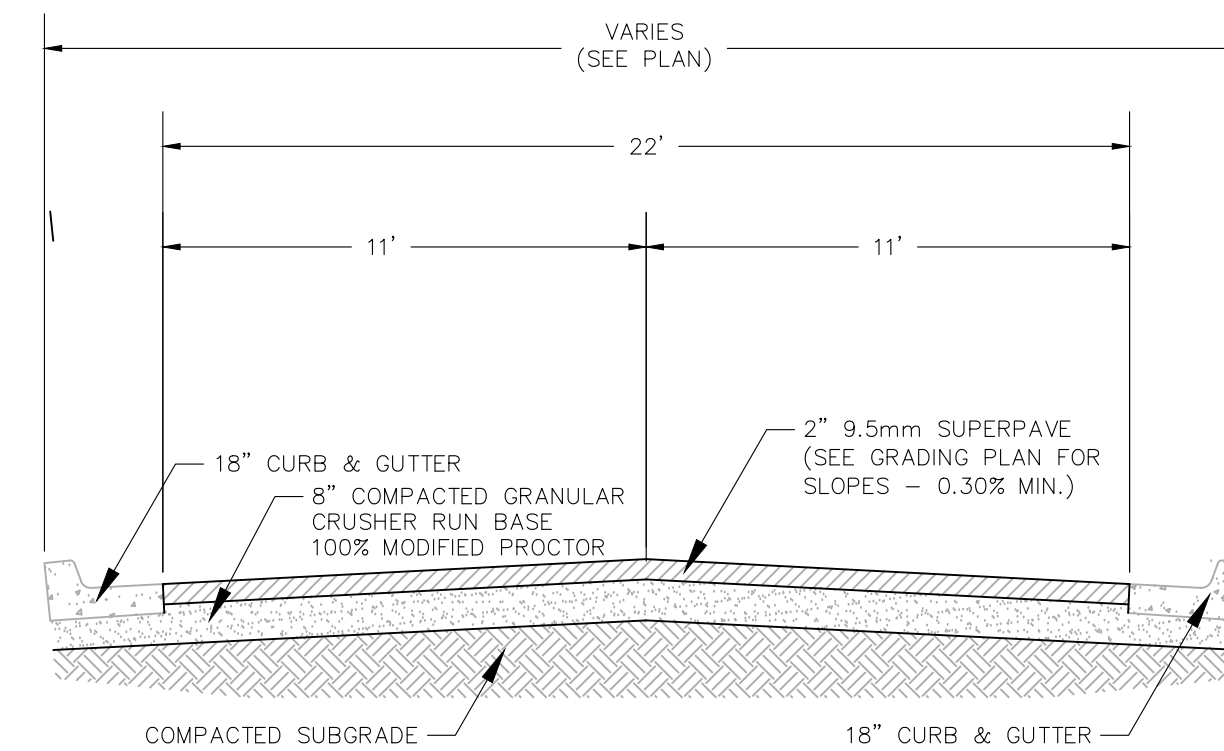


PLAN



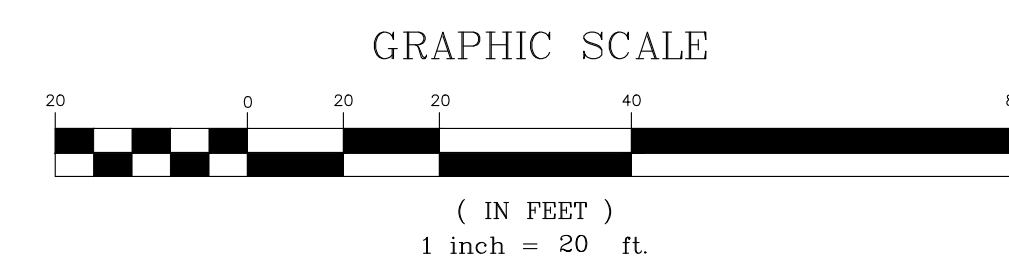
PROFILE

TYPICAL SIDEWALK DETAIL  
N.T.S.



TOWER STREET SOUTH PAVEMENT DETAIL

N.T.S.  
2019-120



GRAPHIC SCALE



PI #0016208  
PI #0016209

DRAWING COMPLETED BY: ELLIOTT WILSON

REVISED: 4. TIA COMMENTS



DATE: 8/11/2020

309 NORTH MAIN STREET  
P.O. BOX 649  
HINESVILLE, GA 31313  
TEL: (912) 368-3212

**P.C. Simonton**  
& Associates, Inc.  
Consulting Engineers

**Tower Street Reconstruction**  
for  
**The City of Folkston**  
Charlton County, Georgia

Site Plan

DATE: AUGUST 19, 2019  
FILE NO: 2019-120PRJ  
SHEET: 6

1050 PARKSIDE COMMONS  
SUITE 101  
GREENSBORO, NC 27409  
TEL: (760) 454-0870

"THIS DRAWING IS AN INSTRUMENT OF SERVICE AND REMAINS THE PROPERTY OF P.C. SIMONTON & ASSOCIATES, INC. IT MAY NOT BE COPIED, REPRODUCED, ALTERED, OR USED FOR ANY OTHER PROJECT WITHOUT THE WRITTEN CONSENT OF P.C. SIMONTON & ASSOCIATES, INC. THE INFORMATION CONTAINED HEREIN IS INTENDED FOR THE USE OF THE CLIENT AND IS NOT TO BE USED FOR ANY OTHER PROJECT WITHOUT THE WRITTEN CONSENT OF P.C. SIMONTON & ASSOCIATES, INC. ASSUMES NO RESPONSIBILITY FOR DATA GENERATED, ALTERED OR STATED FROM THIS DRAWING. IN THE EVENT OF A DISPUTE, HARD COPY SHALL PREVAIL OVER ANY ELECTRONIC MEDIA."  
-P.C. SIMONTON & ASSOCIATES, INC.-